



SKU: 559764

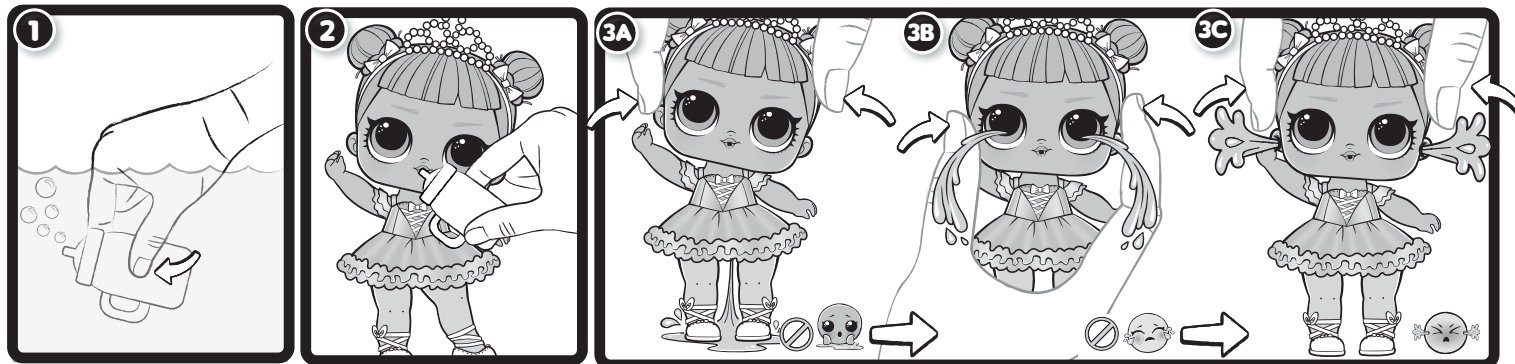
AMAZING SURPRISE™

AGES 3+
ADULT SUPERVISION REQUIRED

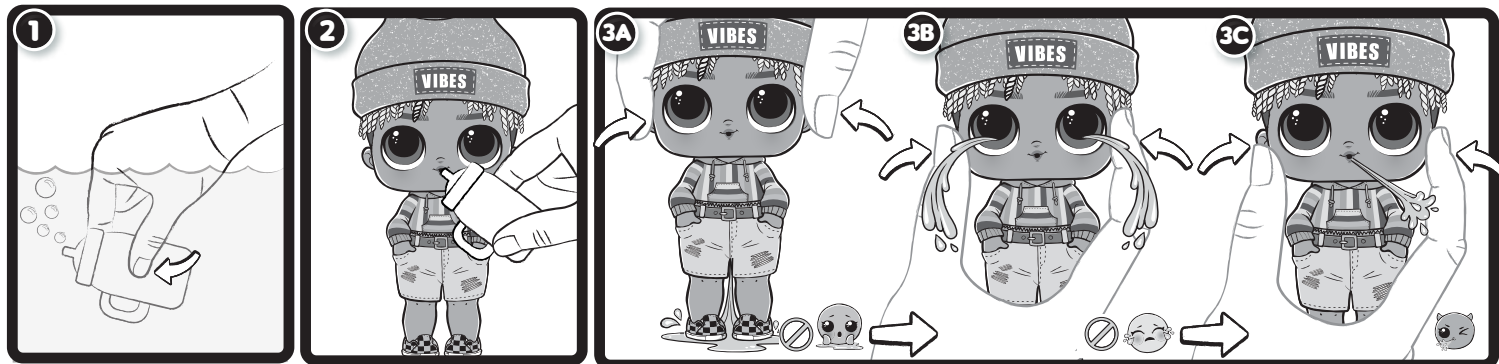
WARNING:
CHOKING HAZARD—Small parts.
Not for children under 3 years.

Illustrations are for reference only. Styles may vary from actual contents.

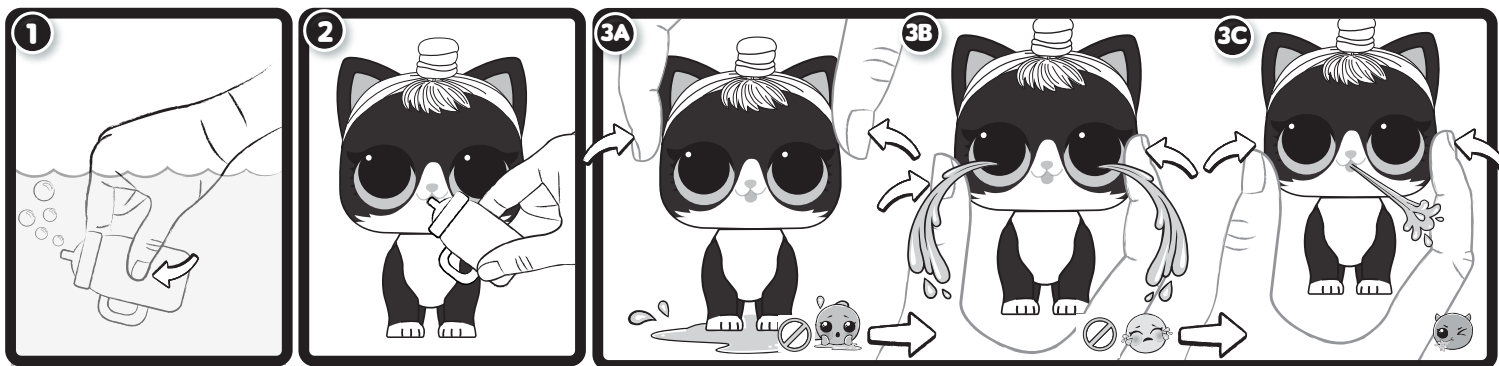
DOLL FEATURES



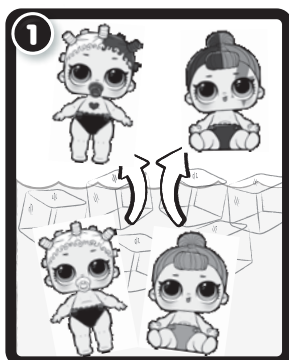
BOY FEATURES



PET FEATURES



LIL SISTERS™ FEATURES



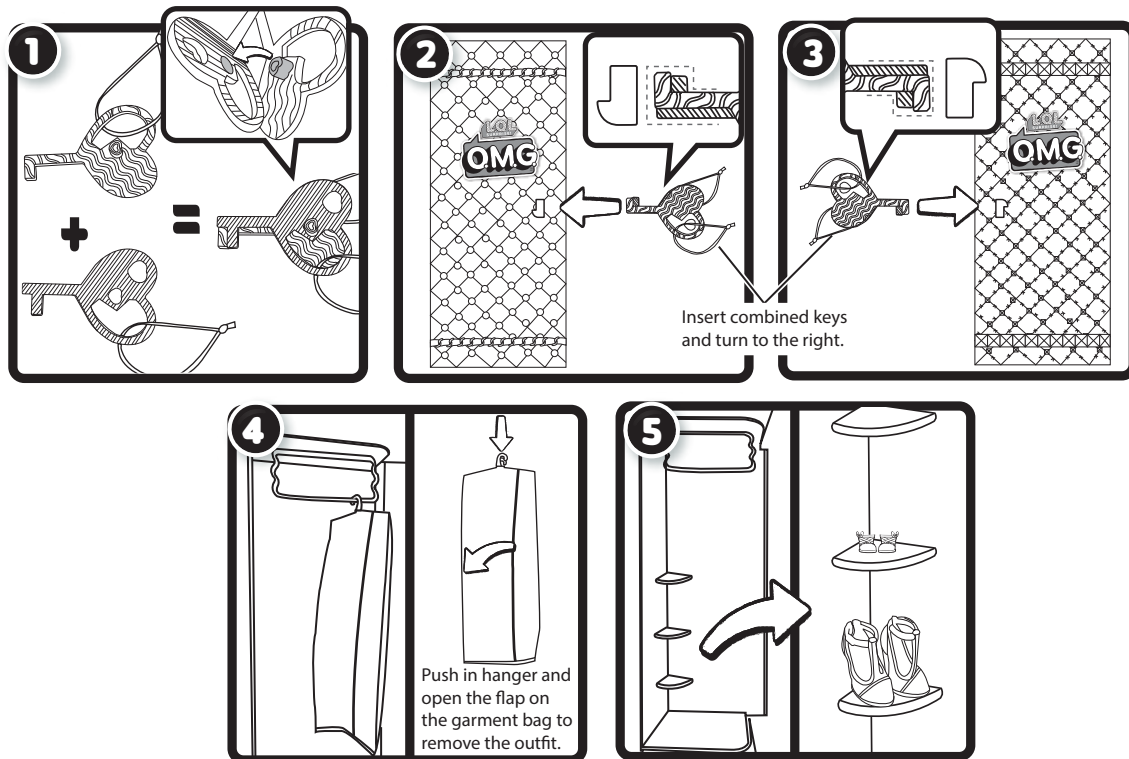
COLOR-CHANGE

- Color change will start at approximately 59°F (15°C), but best results occur if the ice water is chilled to approximately 32°F (0°C) or colder.
- Only Lil Sisters™ change color and will not retain water from the bottle.
- Color change will only work on certain parts of the doll's body or accessories. Not all included accessories change color.
- If color change does not work properly or quickly, the temperature of the doll's body may be too close to the temperature of the water.
- Color change temperatures may vary according to weather conditions.
- The color-change effect of the doll's body has a lengthy, but limited lifespan.

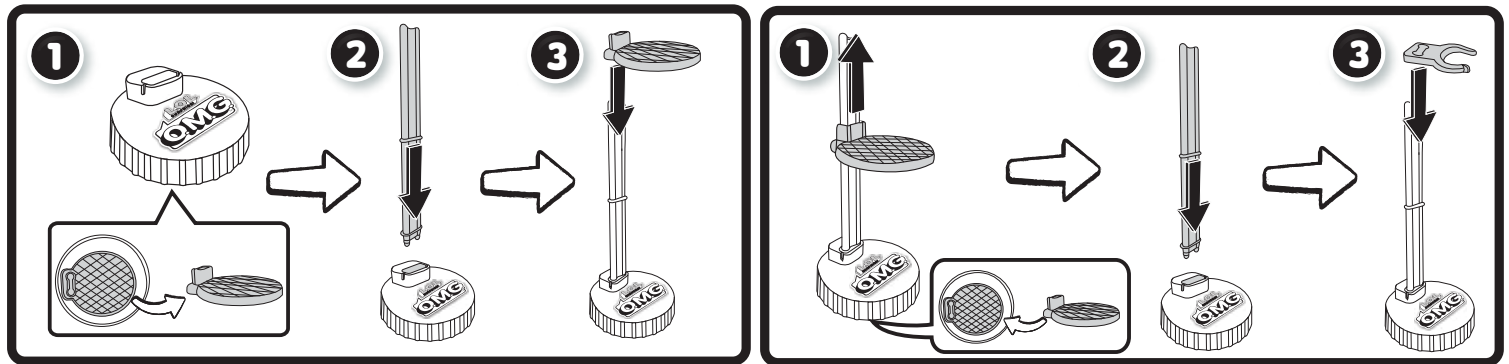
IMPORTANT INFORMATION

- Before beginning, cover the play area to protect from possible water damage.
- Your dolls will either cry, pee or spray water through the ears.
- Boy dolls and pets will either cry, spit or pee.
- For best results, fill the bottle and feed the dolls or pets two times.
- Do not place the dolls or pets in extremely hot water.
- Do not feed the dolls or pets extremely hot water.
- An adult must be present when children are playing with water.
- Do not store the dolls or pets in direct sunlight for extended periods of time.
- Exposure to sunlight may deactivate color change feature.
- Squeeze out all water from the bottle and the doll after each use.
- Thoroughly drain the dolls and pets on a dry towel in a well-ventilated area after use and before storing.
- Air dry only. Do not place in the dryer or subject to excessive heat.
- Boy characters are anatomically correct.

CLOSET



FASHION DOLL CHAIR AND STAND



- Doll stand can be both a stand and a chair.
- The seat for the chair is stored under the base.
- For added support when the doll is sitting, add the c-clip.

IMPORTANT INFORMATION

- Follow the steps on the guide (included) to open all the boxes.
- The plastic risers under boxes 1 and 5 can be removed so the boxes can lay evenly when storing.
- Keys are also charms. Ask an adult to undo the knot and place around the wrist.
- If keys are missing, push in the locking mechanism on the side of the closet to open.

Please keep this manual as it contains important information.



0619-0-E/INT
Printed In China

www.LOLsurprise.com
©2019 MGA Entertainment, Inc.
L.O.L. SURPRISE!™ and L.O.L. SURPRISE! O.M.G.™ are trademarks of MGA in the U.S. and other countries. All logos, names, characters, likenesses, images, slogans, and packaging appearance are the property of MGA.

MGA Entertainment, Inc.
9220 Winnetka Ave., Chatsworth, CA 91311
U.S.A.
(800) 222-4685

MGA Entertainment UK Ltd.
50 Presley Way, Crownhill, Milton Keynes,
MK8 0ES, Bucks, UK
+ 0800 521 558

The preferred method of contact for
Customer Service is through our e-mail
contact form at www.mgae.com

MGA Entertainment (Netherlands) B.V.
Klipperaak 201, 2411 ND Bodegraven, NL
Tel.: +31 (0) 172-758 038
E-mail: klantenservice@mgae.com

Imported by MGA Entertainment Australia Pty Ltd
Suite 2.02, 32 Delhi Road
Macquarie Park NSW 2113
1300 059 676