

## COLOR CHANGE INFORMATION

- Color change will start at approximately 59°F (15°C), but best results occur if the ice water is chilled to approximately 32°F (0°C) or colder.
- Only certain dolls change color.
- Color change will only work on certain parts of the doll's body or accessories. Not all included accessories change color.
- If color change does not work properly or quickly, the temperature of the doll's body may be too close to the temperature of the water.
- Color change temperatures may vary according to weather conditions.
- The color-change effect of the doll's body has a lengthy, but limited lifespan.

## IMPORTANT INFORMATION

- Before beginning, cover the play area to protect from possible water damage.
- Your doll will either cry, spit, pee or change color. Collect them all to see each feature!
- For best results, fill the bottle and feed the doll two times.
- Do not place the doll in extremely hot water.
- Do not feed the doll extremely hot water.
- An adult must be present when children are playing with water.
- Do not store the doll in direct sunlight for extended periods of time.
- Exposure to sunlight may deactivate color change feature.
- Squeeze out all water from the bottle and the doll after each use.
- Thoroughly drain the doll on a dry towel in a well-ventilated area after use and before storing.
- Air dry the doll only. Do not place in the dryer or subject to excessive heat.
- Illustrations are for reference only. Styles may vary from actual contents.
- Only one storage case included. Collect multiple to link them together and display all your dolls!
- Maximum load weight for storage case and contents is 4 lbs. (1.8 kg). Do not overload.



# FASHION SHOW ON-THE-GO™

**WARNING:**  
CHOKING HAZARD—Small parts.  
Not for children under 3 years.

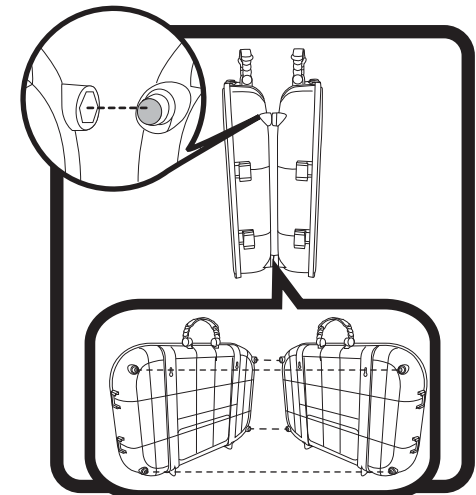
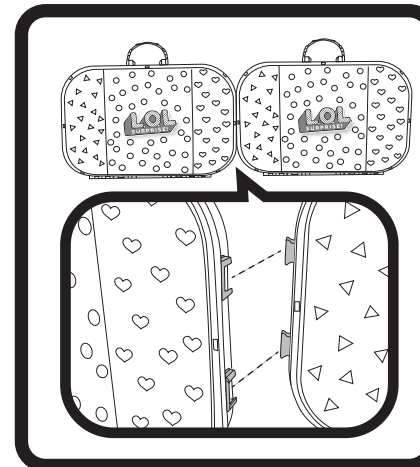
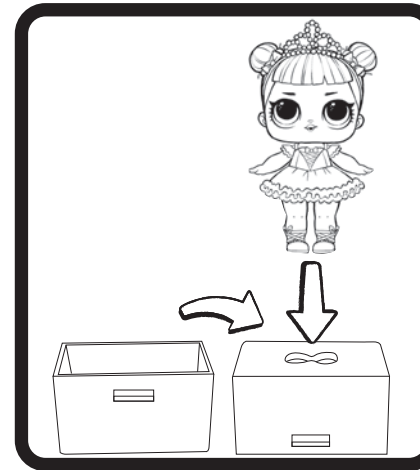
AGES 3+

SKUs: 562689, 562696

ADULT SUPERVISION REQUIRED



**STORAGE CASE**  
(ONLY ONE INCLUDED)



Please keep this manual as it contains important information.

www.LOLsurprise.com  
©2019 MGA Entertainment, Inc.  
L.O.L. SURPRISE!™ is a trademark of MGA in the U.S.  
and other countries. All logos, names, characters,  
likenesses, images, slogans, and packaging  
appearance are the property of MGA.

The preferred method of contact for  
Customer Service is through our e-mail  
contact form at [www.mgae.com](http://www.mgae.com)

**MGA Entertainment (Netherlands) B.V.**  
Klipperaak 201, 2411 ND Bodegraven, NL  
Tel.: +31 (0) 172-758 038  
E-mail: [klantenservice@mgae.com](mailto:klantenservice@mgae.com)

**Imported by MGA Entertainment Australia Pty Ltd**  
Suite 2.02, 32 Delhi Road  
Macquarie Park NSW 2113  
1300 059 676

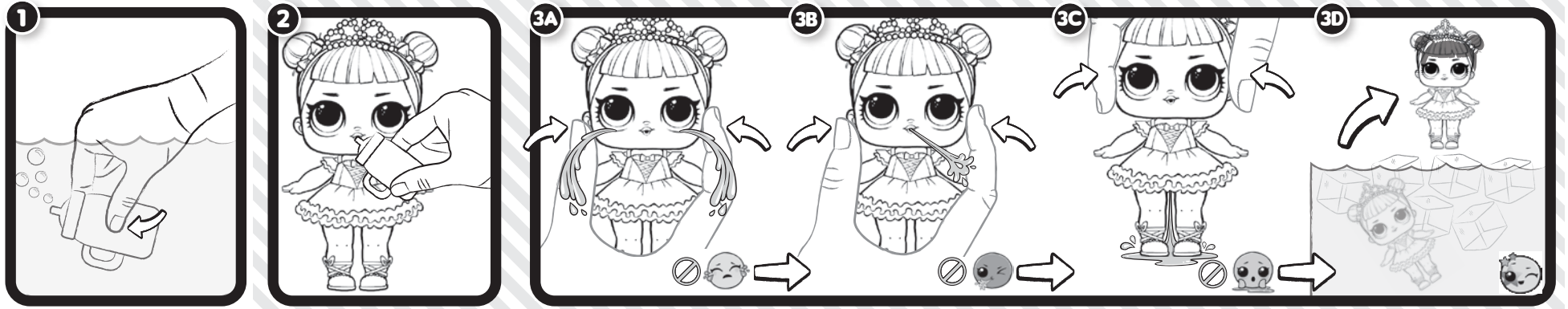
**MGA Entertainment, Inc.**  
16300 Roscoe Blvd.  
Van Nuys, CA 91406 U.S.A.  
(800) 222-4685

**MGA Entertainment UK Ltd.**  
50 Presley Way, Crownhill, Milton Keynes,  
MK8 0ES, Bucks, UK  
+ 0800 521 558



0419-0-E/INT  
Printed In The U.S.A.

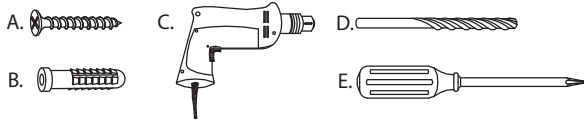
## DOLL FEATURES



## WALL MOUNTING

### ITEMS YOU WILL NEED (not included)

- A. 2 Wood Screws (recommended)
- B. 2 1/4" Plastic Anchors
- C. Drill
- D. 1/4" Drill Bit
- E. Screwdriver



1. Open the storage case lid and hold it the case against the wall. Use a pencil to mark the location of the screw hole openings.
2. Use a 1/4" (6.5 mm) drill bit to drill two pilot holes in the wall where you marked. DO NOT drill oversized holes, or the anchor will not hold tightly to the wall.
3. Tap the wall anchors into the pilot holes.
4. Use a screwdriver to fasten the screws into the wall anchors, but do not tighten all the way.
5. Place the screw hole openings on the case over the screws. Then, slide the case down so the screws are in the narrow parts of the openings.
6. Use the screwdriver to firmly tighten the screws. Do not over-tighten to prevent damaging the case.

- Always use wall anchors appropriate to your wall type, like plaster, drywall, concrete, etc.
- Select wall mount hardware suitable for holding a minimum of 15 lbs. (6.8 kg).
- When possible, mount to wood studs.
- Consult a qualified professional for mounting if you have concerns.

### ⚠ WARNING:

- DO NOT install on a wall where items can fall off and injure a child.
- CHOKING HAZARD: Unassembled hardware (not included) may be a choking hazard to children 3 years and younger.
- Adult assembly required. Keep unassembled parts out of reach of small children.
- Serious or fatal injuries can occur from standing on or pulling on mounted unit:
  - DO NOT allow children to climb on the mounted case.
  - Keep remote controls, toys, and other items that might attract children away from this product.
  - DO NOT place heavy items, like televisions, on top of this product.

