

RAINBOW HIGH™

COLOR CHANGE CAR

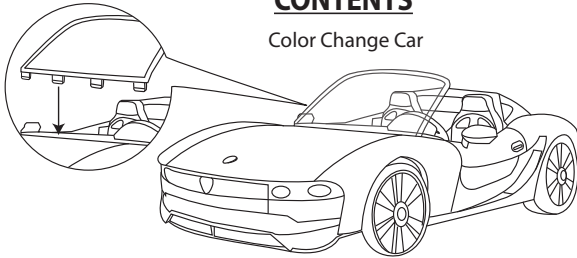
Ages 6+

SKU: 574316

ADULT SUPERVISION RECOMMENDED
ADULT BATTERY INSTALLATION REQUIRED

CONTENTS

Color Change Car



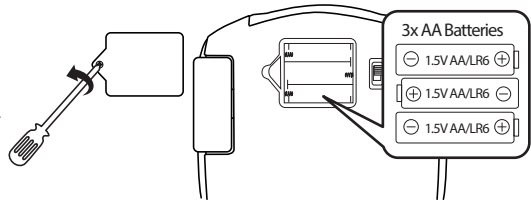
Illustrations are for reference only. Styles may vary from actual contents.

Please remove all packaging including tags, ties & tacking stitches before giving this product to a child.

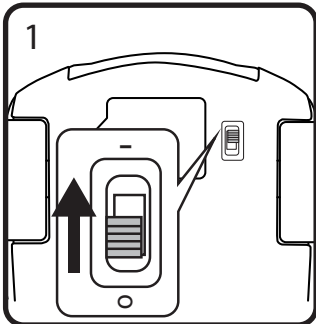
BATTERY INSTALLATION

Before playing, an adult must install fresh alkaline batteries (not included) in the unit. Here's how:

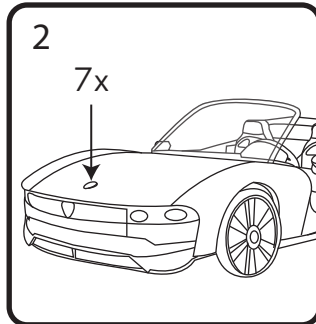
1. Using a Phillips screwdriver (not included) remove the screw and battery compartment cover from under the car.
2. Install three (3) 1.5V AA (LR6) alkaline batteries (not included) making sure the (+) and (-) ends face the proper direction as indicated inside the battery compartment.
3. Replace the compartment cover and tighten the screw.



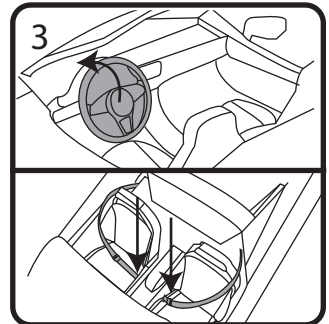
QUICK START



Move the switch under the car from the OFF (O) position to the ON (I) position.



Press the button located on the hood of the car to illuminate the car. Continue pressing the button to cycle through the colors of the rainbow: red, orange, yellow, green, blue and purple. On the seventh press, the car will flash through all the colors of the rainbow for approximately 30 seconds.



To insert a Rainbow High™ doll (not included), lift the steering wheel up, place the doll in the seat and buckle it with the seat belt. PRO TIP: The windshield is also detachable!

IMPORTANT INFORMATION

⚠ **WARNING!** This toy produces flashes that may trigger epilepsy in sensitised individuals.

- After 30 seconds of no activity, the lights will turn off. To turn back on, press the button on the hood of the car.
- After the car flashes in all the colors of the rainbow, pressing the button will start the cycle again with red.
- To conserve battery power, always turn the unit OFF (O) after playing.
- Do not play with car in the street, where there is vehicular traffic or in heavily traveled areas with pedestrians.
- Do not run the car into furniture, walls, pets, people, etc., as doing so may cause injury to the person and irreparable damage to the unit.
- Keep water away from the battery compartment.
- Do not drive through water, mud, etc.

SAFE BATTERY USAGE

- Use alkaline batteries for best performance and longer life.
- Use only the battery type recommended for the unit.
- Batteries should be replaced only by an adult.
- Insert batteries with the correct polarity (+ and -).
- Do not mix old and new batteries.
- Do not mix alkaline, standard (carbon-zinc), or rechargeable batteries.
- Do not short-circuit batteries.
- When not used for an extended time, remove batteries to prevent possible leakage and damage to the unit.
- Do not mix rechargeable and non-rechargeable batteries.
- Rechargeable batteries are to be removed from the toy before charging.
- Rechargeable batteries are to be recharged only under adult supervision.
- Do not recharge non-rechargeable batteries.
- Exhausted batteries are to be removed from the toy.
- Do not dispose of batteries in fire as they may leak or explode.

FCC COMPLIANCE

NOTE: This equipment has been tested and found to comply with the limits for a Class B digital device, pursuant to Part 15 of the FCC Rules. These limits are designed to provide reasonable protection against harmful interference in a residential installation. This equipment generates, uses and can radiate radio frequency energy and, if not installed and used in accordance with the instructions, may cause harmful interference to radio communications. However, there is no guarantee that interference will not occur in a particular installation. If this equipment does cause harmful interference to radio or television reception, which can be determined by turning the equipment off and on, the user is encouraged to try to correct the interference by one or more of the following measures:

- Reorient or relocate the receiving antenna.
- Increase the separation between the equipment and receiver.
- Connect the equipment into an outlet on a circuit different from that to which the receiver is connected.
- Consult the dealer or an experienced radio/TV technician for help.

This device complies with Part 15 of the FCC Rules. Operation is subject to the following two conditions: (1) This device may not cause harmful interference, and (2) this device must accept any interference received, including interference that may cause undesired operation.

Caution: Modifications not authorized by the manufacturer may void users authority to operate this device.
CAN ICES-3 (B)/NMB-3(B).



'Let's care for the environment!'

The wheelie bin symbol indicates that the product must not be disposed of with other household waste. Please use designated collection points or recycling facilities when disposing of the item. Do not treat old batteries as household waste. Take them to a designated recycling facility.

Please keep this manual as it contains important information.



0321-0-E/INT

Printed in China

WWW.RAINBOWHIGH.COM

©2021 MGA Entertainment, Inc.

RAINBOW HIGH™ is a trademark of MGA in the U.S. and other countries. All logos, names, characters, likenesses, images, slogans, and packaging appearance are the property of MGA.

MGA Entertainment, Inc.

9220 Winnetka Ave. Chatsworth, CA 91311
U.S.A.
(800) 222-4685

MGA Entertainment UK Ltd.

50 Presley Way, Crownhill, Milton Keynes,
MK8 0ES, Bucks, UK
+ 0800 521 558

MGA Entertainment (Netherlands) B.V.

Baronie 68-70, 2404 XG Alphen a/d Rijn,
The Netherlands
Tel: +31 (0) 172 758038

Imported by MGA Entertainment Australia Pty Ltd.

Suite 2.02, 32 Delhi Road
Macquarie Park NSW 2113
1300 059 676

The preferred method of contact for Customer Service is through our e-mail contact form at www.mgae.com

#COLLECTTHERAINBOW  