

SAFE BATTERY USAGE

- Use alkaline batteries for best performance and longer life.
- Use only the battery type recommended for the unit.
- Batteries should be replaced only by an adult.
- Insert batteries with the correct polarity (+ and -).
- Do not mix old and new batteries.
- Do not mix alkaline, standard (carbon-zinc), or rechargeable batteries.
- Do not short-circuit batteries.
- When not used for an extended time, remove batteries to prevent possible leakage and damage to the unit.
- Do not mix rechargeable and non-rechargeable batteries.
- Rechargeable batteries are to be removed from the toy before charging.
- Rechargeable batteries are to be recharged only under adult supervision.
- Do not recharge non-rechargeable batteries.
- Exhausted batteries are to be removed from the toy.
- Do not dispose of batteries in fire as they may leak or explode.



WARNING:

This product contains a Button or Coin Cell Battery. A swallowed Button or Coin Cell Battery can cause internal chemical burns in as little as two hours and lead to death. Dispose of used batteries immediately. Keep new and used batteries away from children. If you think batteries might have been swallowed or placed inside any part of the body, seek immediate medical attention.

IMPORTANT NOTES ABOUT BUTTON BATTERIES


- WARNING - KEEP BATTERIES OUT OF REACH OF CHILDREN

- Swallowing may lead to serious injury in as little as 2 hours or death, due to chemical burns and potential perforation of the esophagus.
- If you suspect your child has swallowed or inserted a button battery immediately call the 24-hour Poisons Information Centre on 13 1126 (Australia)/ your local emergency services for fast, expert advice.
- Examine devices and make sure the battery compartment is correctly secured, e.g. that the screw or other mechanical fastener is tightened. Do not use if compartment is not secure.
- Dispose of used button batteries immediately and safely. Flat batteries can still be dangerous.
- Adults shall tell potential users about the risk of button batteries and keep their children away from button cell. Adult supervision is required.

FCC COMPLIANCE

NOTE: This equipment has been tested and found to comply with the limits for a Class B digital device, pursuant to Part 15 of the FCC Rules. These limits are designed to provide reasonable protection against harmful interference in a residential installation. This equipment generates, uses and can radiate radio frequency energy and, if not installed and used in accordance with the instructions, may cause harmful interference to radio communications. However, there is no guarantee that interference will not occur in a particular installation. If this equipment does cause harmful interference to radio or television reception, which can be determined by turning the equipment off and on, the user is encouraged to try to correct the interference by one or more of the following measures:

- Reorient or relocate the receiving antenna.
 - Increase the separation between the equipment and receiver.
 - Connect the equipment into an outlet on a circuit different from that to which the receiver is connected.
 - Consult the dealer or an experienced radio/TV technician for help.
- This device complies with Part 15 of the FCC Rules. Operation is subject to the following two conditions: (1) This device may not cause harmful interference, and (2) this device must accept any interference received, including interference that may cause undesired operation.
- Caution: Modifications not authorized by the manufacturer may void users authority to operate this device.
CAN ICES-3 (B)/NMB-3(B).

 'Let's care for the environment!' The wheelee bin symbol indicates that the product must not be disposed of with other household waste. Please use designated collection points or recycling facilities when disposing of the item.

Do not treat old batteries as household waste. Take them to a designated recycling facility.

Please keep this manual as it contains important information.



1121-1-E/INT

Printed in China

The preferred method of contact for Customer Service is through our e-mail contact form at www.mgae.com



WWW.NANANASURPRISE.COM

©2021 MGA Entertainment, Inc. NA! NA! NA! SURPRISE™ is a trademark of MGA in the U.S. and other countries. All logos, names, characters, likenesses, images, slogans, and packaging appearance are the property of MGA.

MGA Entertainment, Inc.
9220 Winnetka Ave.
Chatsworth, CA 91311 U.S.A.
(800) 222-4685

MGA Entertainment UK Ltd.
50 Presley Way, Crownhill,
Milton Keynes, MK8 0ES, Bucks, UK
0800 521 558

MGA Entertainment (Netherlands) B.V.
Baronie 68-70, 2404 XG Alphen a/d Rijn, The Netherlands
Tel: +31 (0) 172 758038

Imported by MGA Entertainment Australia Pty Ltd
Suite 2.02, 32 Delhi Road
Macquarie Park NSW 2113
1300 059 676

Na! Na! Na! Surprise

Kitty-Cat Campground

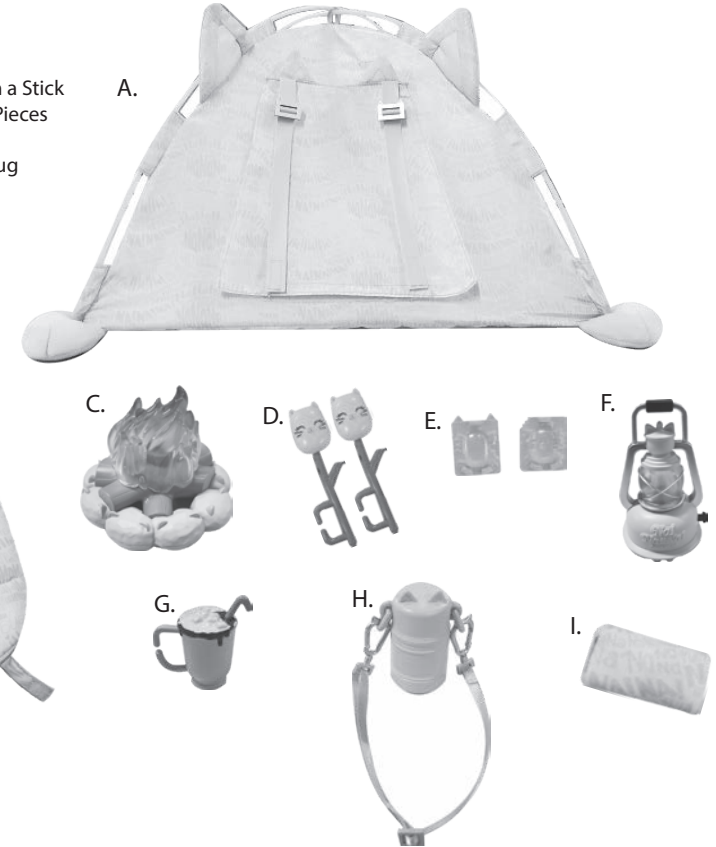
 **WARNING:**
CHOKING HAZARD-Small parts.
Not for children under 3 years.

SKU: 579458

AGES 3+
ADULT SUPERVISION RECOMMENDED

CONTENTS

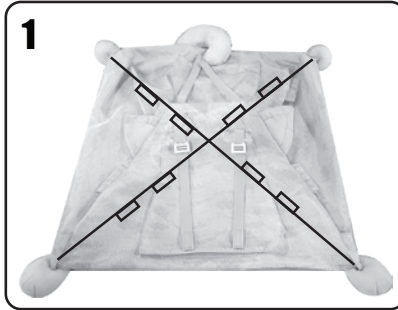
- A. 1 Tent
- B. 1 Sleeping Bag
- C. 1 Campfire
- D. 2 Marshmallows on a Stick
- E. 2 Graham Cracker Pieces
- F. 1 Lantern
- G. 1 Hot Chocolate Mug
- H. 1 Water Canteen
- I. 1 Pillow



NOTE: Before beginning, remove the pull tabs from under the campfire and lantern.

Illustrations are for reference only. Styles may vary from actual contents.
Please remove all packaging including tags, ties & tacking stitches before giving this product to a child.

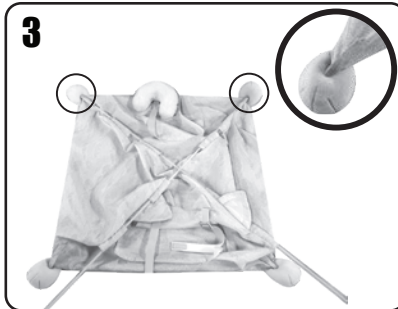
TENT ASSEMBLY



Lay and stretch out the tent.



Starting at one corner of the tent, insert one pole into the pole sleeve making sure it goes diagonally over the top of the tent and into the opposite sleeve. Repeat for the second pole.

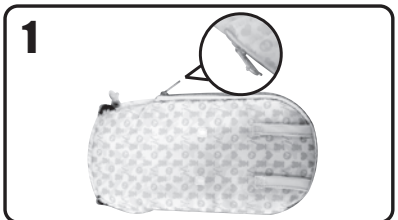


Place the ends of the poles into the pockets across from your starting point. Repeat for the other two pockets. **Note:** Slightly bend each pole into an arc while completing this step.

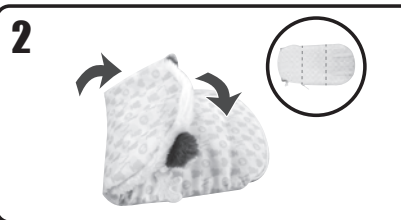


Where the two poles cross in an "X" at the top of the tent, tie the two poles together with the fabric ties provided.

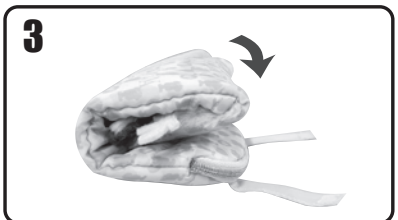
SLEEPING BAG



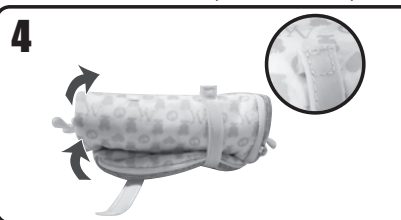
Lay sleeping bag face down. **Note:** Zip sleeping bag closed prior to rolling up.



Take the top of the sleeping bag and fold a third of the bag towards the other end of the bag. **Note:** Folding the bag more than a third of the way will make it difficult to complete the next steps.

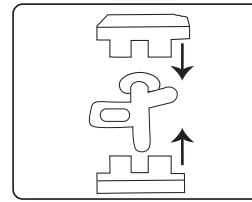


Fold the sleeping bag over once more. Pull out straps making sure the loop portion of the hook and loop fastener is facing up. **Note:** Push bag down to ensure it stays in place while preparing to attach straps.

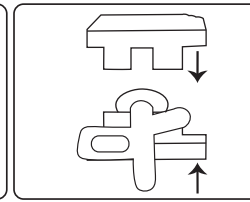


Take the first strap and pull over and around sleeping bag to connect to the other end of the hook and loop fastener. Then repeat for the second strap.

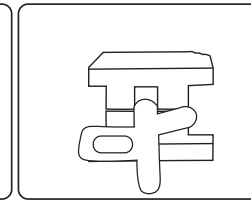
MARSHMALLOW AND GRAHAM CRACKERS ON A STICK ASSEMBLY



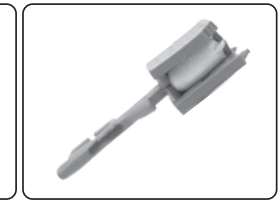
Place a graham cracker on each side of the marshmallow on a stick. **Note:** This will only work with the stick that has the smaller marshmallow.



Place the marshmallow on a stick on the bottom graham cracker as pictured.



Place the second graham cracker on top of the marshmallow on a stick and press together to secure.

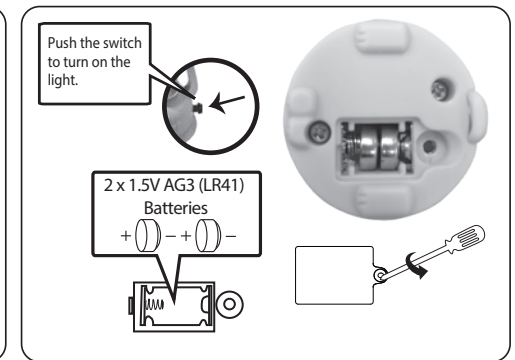
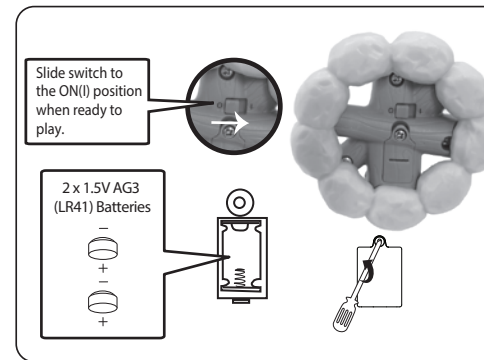


Once both graham cracker pieces are secure, they should stay attached without needing to be held together.

BATTERY REPLACEMENT

An adult must install fresh alkaline batteries in your campfire and lantern should the batteries need replacing. Here's how:

- Using a Phillips screwdriver (not included), remove the screws and battery compartment covers located on the bottom of the campfire and the bottom of the lantern.
- Install two (2) fresh 1.5V AG3 (LR41) alkaline batteries (not included) into the campfire and lantern, making sure the (+) and (-) ends face the proper direction as indicated inside the battery compartments.
- Replace the compartment covers and tighten the screws.



IMPORTANT INFORMATION

- Use a slightly damp cloth when cleaning the tent. Never use harsh chemicals to clean the product.
- Do not wash or place fabric items in water, as it may damage it.
- Do not leave product in direct sunlight for a long period of time.
- Check the condition of the product before giving to children. Dispose the product, part or component immediately if damaged.
- Unsuitable methods of cleaning, storage, and use might damage the product.
- Frequently check the product. Do not use if the product was worn or damaged.
- Keep all flame sources away from the sleeping bag & tent.
- Do not use candles, matches, or any other heat source near or around the sleeping bag & tent.
- Do not store the sleeping bag if it is moist or wet. Allow the bag to dry thoroughly before storing.
- Keep long hair and loose apparel away from the zipper.