

IMPORTANT INFORMATION

- Do not store the dolls in direct sunlight for extended periods of time.
- Only one doll is included. Multiple shown for demonstration only.
- Accessories and doll stand will vary for Mini O.M.G. doll.
- Only one doll housing included.
- Housing style will vary by Mini O.M.G. doll. Collect them all!
- Use gentle force when connecting the keyring to the top of the doll housing.
- Use appropriate force when connecting the feet to the bottom of the doll housing. Note: This is a one time connection.
- Clutch usage: Place the peg on your doll's clutch purse or microphone in the palm of your Mini O.M.G. doll to connect.
- Microphone usage: Place the peg on your doll's microphone in the palm of your Mini O.M.G. doll to connect.
- Not all accessories mentioned are included. Each doll has their individual set of accessories.

www.LOLsurprise.com

©2021 MGA Entertainment, Inc.

L.O.L. SURPRISE!™ and MINI L.O.L. SURPRISE!™ are trademarks of MGA in the U.S. and other countries. All logos, names, characters, likenesses, images, slogans, and packaging appearance are the property of MGA.

MGA Entertainment, Inc.
9220 Winnetka Ave.
Chatsworth, CA 91311 U.S.A.
(800) 222-4685

MGA Entertainment UK Ltd.
50 Presley Way, Crownhill
Milton Keynes, MK8 0ES
Bucks, UK
+ 0800 521 558

MGA Entertainment (Netherlands) B.V.
Baronie 68-70, 2404 XG Alphen a/d Rijn
The Netherlands
Tel: +31 (0) 172 758 038

Imported by MGA Entertainment Australia Pty Ltd
Suite 2.02, 32 Delhi Road, Macquarie Park NSW 2113
1300 059 676

The preferred method of contact for
Customer Service is through our e-mail
contact form at www.mgae.com

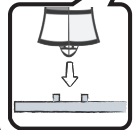
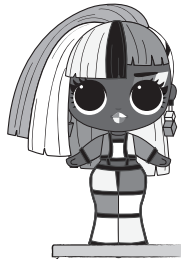
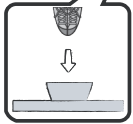
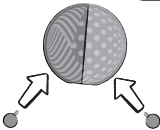
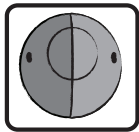
Printed in China
0721-0-E/INT

Please keep this manual as it contains important information.
Illustrations are for reference only. Styles may vary from actual contents.



AGES 3+
ADULT SUPERVISION REQUIRED
SKU: 579618, 579625

WARNING:
CHOKING HAZARD—Small parts.
Not for children under 3 years.

1A**1B****2A****2B****3**