

IMPORTANT INFORMATION

- Do not store the dolls in direct sunlight for extended periods of time.
- Only one family is included. Multiple shown for demonstration only.
- Your Mini Family will include 1 Mini O.M.G., 1 Mini Tot, and 1 Mini Pet OR 2 Mini Tots and 2 Mini Pets.
- Accessories and doll stand will vary for Mini O.M.G. doll.
- Stand not included with Mini Pet.
- Housing style will vary by L.O.L. Mini Family characters. Collect them all!
- Use gentle force when connecting the keyring to the top of the doll housing.
- Use appropriate force when connecting the feet to the bottom of the doll housing. Note: This is a one time connection.
- Clutch usage: Place the peg on your doll's clutch purse or microphone in the palm of your Mini O.M.G. doll to connect.
- Microphone usage: Place the peg on your doll's microphone in the palm of your Mini O.M.G. doll to connect.
- Not all accessories mentioned are included. Each doll has their individual set of accessories.

Please keep this manual as it contains important information. Illustrations are for reference only. Styles may vary from actual contents.



www.LOLsurprise.com

©2021 MGA Entertainment, Inc.

L.O.L. SURPRISE!™ and MINI L.O.L. SURPRISE!™ are trademarks of MGA in the U.S. and other countries. All logos, names, characters, likenesses, images, slogans, and packaging appearance are the property of MGA.

MGA Entertainment, Inc.

9220 Winnetka Ave.

Chatsworth, CA 91311 U.S.A.

(800) 222-4685

MGA Entertainment UK Ltd.

50 Presley Way, Crownhill

Milton Keynes, MK8 0ES

Bucks, UK

+ 0800 521 558

MGA Entertainment (Netherlands) B.V.

Baronie 68-70, 2404 XG Alphen a/d Rijn

The Netherlands

Tel: +31 (0) 172 758 038

Imported by MGA Entertainment Australia Pty Ltd

Suite 2.02, 32 Delhi Road, Macquarie Park NSW 2113

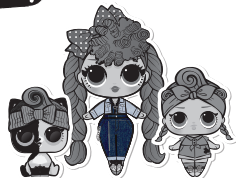
1300 059 676

The preferred method of contact for Customer Service is through our e-mail contact form at www.mgae.com

Printed in China

0721-0-E/INT

MINI
L.O.L.
SURPRISE!
family

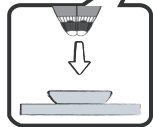
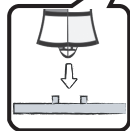
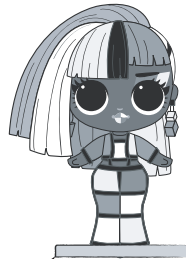
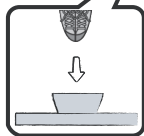
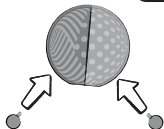
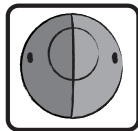


AGES 3+

ADULT SUPERVISION REQUIRED

SKU: 579632, 581239

WARNING:
CHOKING HAZARD—Small parts.
Not for children under 3 years.

1A**1B****1C****2A****2B****3**