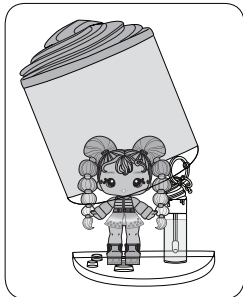


DISPLAY AND STORAGE:



Place your doll and lip gloss into the container to display your cosmetics and prevent the scent of the doll from volatilizing quickly.

Illustrations are for reference only. Styles may vary from actual contents. Please remove all packaging including tags, ties & tacking stitches before giving this product to a child.



0824-0-E
Printed in China

©2024 MGA Entertainment, Inc. YUMMILAND™ is a trademark of MGA in the U.S. and other countries. All logos, names, characters, likenesses, images, slogans, and packaging appearance are the property of MGA.

MGA Entertainment, Inc.
9220 Winnetka Ave.
Chatsworth, CA 91311 U.S.A.
(800) 222-4685

The preferred method of contact for Customer Service is through our e-mail contact form at www.mgae.com

YUMMILAND™

Ages 4+

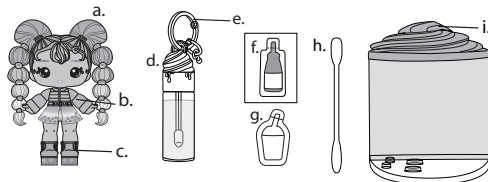


SKUs: 525455, 525462, 525479,
525486, 525615

ADULT SUPERVISION REQUIRED

CONTENTS

- | | |
|------------------------|---------------------------------|
| a. 1 Doll | e. 1 Clip |
| b. 1 Outfit | f. 1 Blister of Scent |
| c. 1 Pair of Shoes | g. 1 Blister of Liquid Colorant |
| d. 1 Tube of Lip Gloss | h. 1 Stirring Spoon |
| | i. 1 container |



⚠️WARNING

- Not suitable for children under 4 years. For use under adult supervision. Read the instructions before use, follow them and keep them for reference. Keep the kit out of reach of children under 4 years old. If swallowed: Wash out mouth with water and drink some fresh water. Do not induce vomiting. Seek immediate medical advice.
- For use under adult supervision. May cause allergic reaction. Wash hands thoroughly after use.
- DO NOT apply lip gloss around eyes. Only apply lip gloss to the lip area.
- Cosmetics should not be used for purposes other than those listed in these instructions.
- Cosmetics are for external use only. Discontinue use if signs of irritation or rash appear. Do not use on broken skin.
- These cosmetics are laboratory tested and safe for use as prescribed. As with all cosmetics, some individual skin types may experience minor skin irritation to ingredients. If skin rash, irritation, sensitization or other allergic reactions occur, discontinue use immediately and seek medical advice.
- Do not ingest or inhale any of the cosmetics or contents included in this package.
- Avoid direct contact with eyes. If this occurs, flush with water immediately. If inflammation occurs or pain persists, seek medical advice.

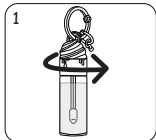
IMPORTANT INFORMATION

- Protect and cover surrounding surfaces before use to prevent possible damage or staining. Color transfer may occur.
- Products may damage or stain certain fabrics, carpeting, wood finishes, or other porous and polished surfaces.
- Keep paper towels (not included) handy for cleaning up spills, wiping fingers, etc.
- Store lip gloss and ingredients in a cool, dry environment.
- Thoroughly wash, rinse and dry tools after they have been used.
- Wash hands before and after using cosmetics.
- Tightly close all lids and caps after use.
- Do not dispose of lip gloss in the drain. Dispose in a trash receptacle once you are finished using it.
- Discontinue use if lip gloss has been left opened for a long period of time or if it has gotten dirty.
- Do not leave cosmetics in direct sun or in very hot areas.

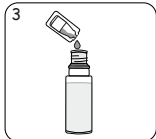
QUICK START:

Before beginning, wash and dry hands thoroughly, then cover the play area to prevent possible damage.

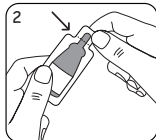
NOTE: Contents of this kit may not be used to create items for resale.



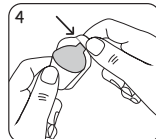
Twist the lip gloss cap counterclockwise to open and set aside.



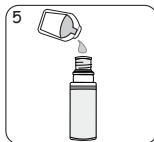
Add the whole soda blister of scented liquid into the lip gloss tube.



Break the soda blister open at the perforated line marked on the straw.



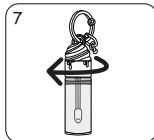
Break the boba blister open at the perforated line marked on the straw.



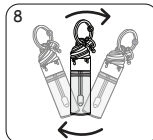
Add the liquid into the lip gloss tube to customize your gloss with a colorful look.



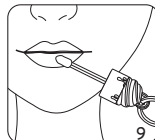
Mix the lip gloss with the provided stirring spoon until everything is combined.



Twist the lip gloss cap clockwise around to close tightly shut.

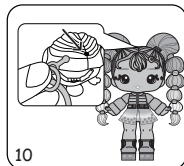


Shake the mixture around to combine everything together.

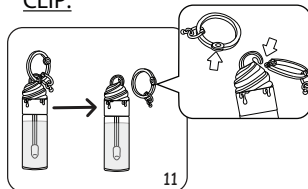


Apply lip gloss over clean lips. Remove the lip gloss with water and a damp, clean towel (not included).

CLIP:



Insert the plug into the hole on the top of the doll's head. Simply pull out the plug if you want to separate the clip from the doll.



Open the clip to hook and remove from lip gloss cap.